

# Recreation and Trails Map

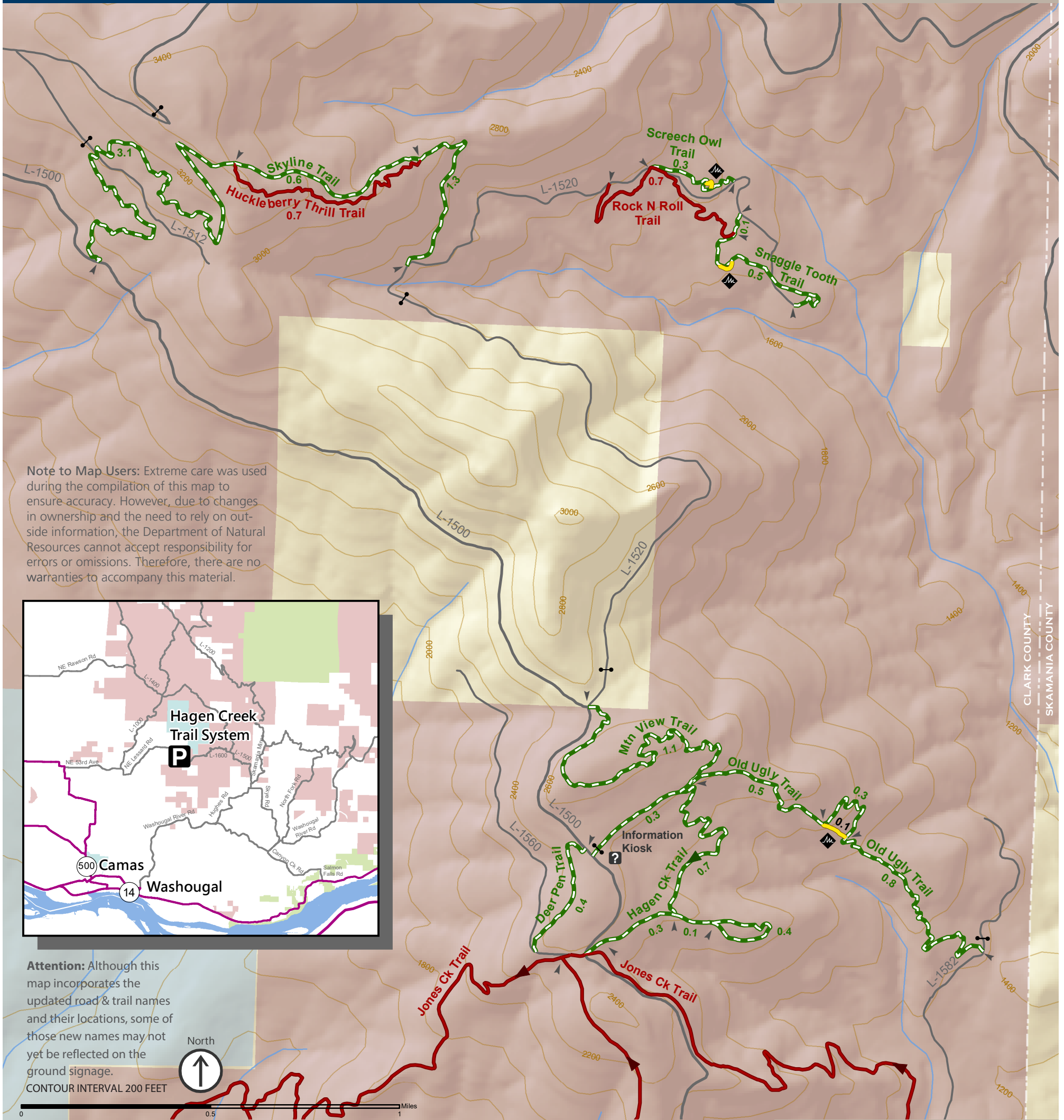
Discover Pass required for vehicles



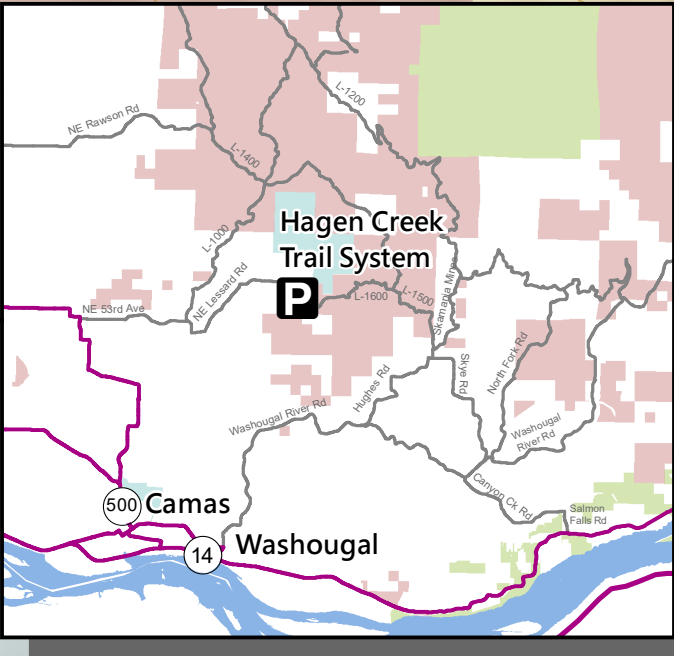
discoverpass.wa.gov

## Yacolt Burn State Forest

Motorized Trails  
Closed Dec 1 - April 30



**Note to Map Users:** Extreme care was used during the compilation of this map to ensure accuracy. However, due to changes in ownership and the need to rely on outside information, the Department of Natural Resources cannot accept responsibility for errors or omissions. Therefore, there are no warranties to accompany this material.



**Attention:** Although this map incorporates the updated road & trail names and their locations, some of those new names may not yet be reflected on the ground signage.  
CONTOUR INTERVAL 200 FEET



**Please stay on designated trails. If a trail is not posted with DNR signs, and does not appear on DNR maps, it is not approved for public use.**

- Challenge Trail (Most Difficult)
- Information Kiosk
- DNR Trust Lands
- US Forest Service
- County or Municipal Lands
- County Boundary
- Challenge Trail - 4x4 / ATV / Motorcycle
- 4x4 / ATV / Motorcycle
- ATV / Motorcycle
- State or County Road
- Primary Forest Road
- Secondary Forest Road
- Gate
- Trail Mileage



For current trail conditions, scan here



Know the rules - scan here to learn more

**WARNING:** Gates shown on the map are normally closed. Other gates, not shown on the map, are normally open. However, they may be closed at any time to facilitate specific work projects.



**NATURAL RESOURCES**

[www.dnr.wa.gov/recreation](http://www.dnr.wa.gov/recreation)

To report illegal activities, call toll free 1-855-883-8368, [forestwatch@dnr.wa.gov](mailto:forestwatch@dnr.wa.gov)